

WEISER

BALDWIN



2020 Designer Catalogue



Amador Handleset
Polished Chrome

Tavaris Handleset
Satin Nickel



Metropolitan Deadbolt
Satin Nickel



Halifax Lever
Satin Nickel



Milan Lever
Satin Nickel



Cambie Knob
Satin Nickel

CONTENTS

4		SmartKey
5		Microban
7		Electronics
11		Handlesets
15		Levers, Knobs, Deadbolts
20		Finish Guide
23		Tell Commercial Hardware
27		Baldwin Reserve
30		Warranty



SMARTKEY SECURITY™

What is SmartKey?

SmartKey™ is a technology that allows you to re-key a lock in just seconds while improving security without removing the lock from the door.

How Does it Work?

SmartKey™ has a patented side locking bar technology that replaces the traditional pin and tumbler design. This new design includes BumpGuard™ for improved security against lock-bumping, an attack technique that can defeat traditional pin and tumbler locks.

Advanced Security.

Increased Durability.

Superior Convenience.

DURABLE TECHNOLOGY

Locking bar, racks and pins are made out of stainless steel for increased strength and durability.

BUMPGUARD

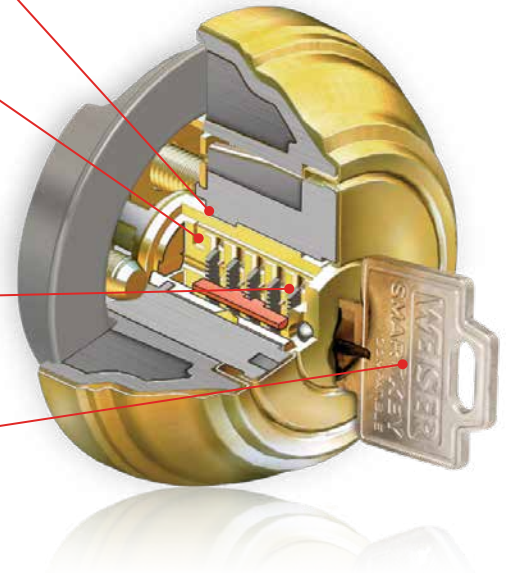
The SmartKey™ system provides ultimate security versus other deadbolts by protecting you from the unlawful entry method known as Lock Bumping. Lock bumping is an illegal technique using specially cut keys that can defeat conventional pin and tumbler locks.

DRILL RESISTANCE

Two steel balls are inserted into the front of the cylinder to resist attacks from drilling.

REKEY IT YOURSELF

SmartKey™ locks allow you to rekey your lock in less than 30 seconds by using the SmartKey™ Learn Tool (included). If you ever find yourself concerned about who might have a key to your door, simply rekey your SmartKey lock in less than 30 seconds, and you'll be feeling safe and sound.



Why Would I Need To Re-Key My Locks?

- Have you ever loaned out a key that was never returned, or wondered what happened to a lost key?
- Would you like to be able to grant temporary access to neighbors, contractors, or hired help without giving them your personal house key?
- Do you have different keys for your front, back, and side doors?

MICROBAN®

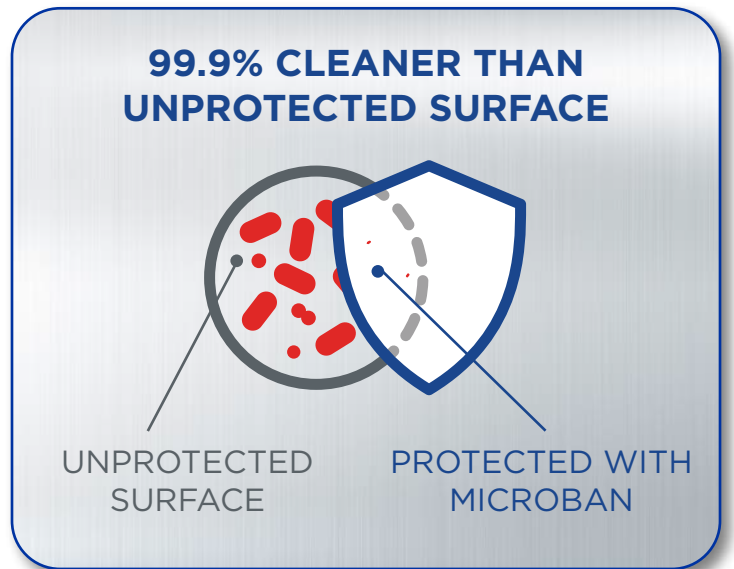
99.9% CLEANER†

Weiser® and Microban®, the global leader in built-in antimicrobial protection, have teamed up to improve the standard for door hardware.

Weiser® now offers antimicrobial protection on select products, inhibiting the growth of bacteria on frequently touched door hardware in the home.

Bacteria can double every 20 minutes on unprotected surfaces, but door hardware with Microban protection works to continuously fight off microbes.

- Door hardware is 99.9% cleaner than knobs without Microban
- The antimicrobial coating last for the lifetime of the hardware finish, so you can worry less and feel more secure in your home.
- No need to clean door hardware
- 24/7 Antimicrobial protection
- Microban protection is effective against a broad spectrum of bacteria



Microban protection is available on select products and finishes.



Halifax Lever
Matte Black



Tristan Lever
Satin Nickel



Fairfax Knob
Satin Nickel



**Key Control
Deadbolt**
Satin Nickel



**Uptown
Deadbolt**
Satin Nickel



PAUL'S FLORIST

1871 ST PAUL

BROOKLYN BISTRO

BROCKLYN B

ELECTRONICS

Technology can deliver quality, convenience and style.



Obsidian Deadbolt
+ Lisbon Lever
Matte Black

MULTIPLE RANGES OF ACCESS AND CONTROL. NO COMPROMISE ON DESIGN.

KEYLESS ENTRY



PowerBolt 2

- Keyless Design
- 6 user codes
- Grade 3



SmartCode 10

- Keyless Design
- 16 user codes
- Grade 2
- UL Certified



Obsidian

- Keyless Design with Touchpad entry keypad
- 16 user codes
- Grade 2

CHOOSE FOR:

- Mechanical or shared access rooms
- Easy entry to rooms
- Sleek, low profile design

REMOTE ACCESS WITH HUB



Smartcode 10 Touchscreen

- Keyless Design with Touchpad entry keypad
- 30 user codes
- Grade 2
- Available in Zigbee or Z-wave



Premis

- Keyless Design with Touchpad entry keypad
- 30 user codes
- Grade 2
- Works with Apple HomeKit

- Lock & Unlock from anywhere
- Touchpad entry
- Connection with existing Smart Hub or Kevo Plus Hub

BLUETOOTH ACCESS



Aura Bluetooth Smart Lock

- Keyless Design with Touchpad entry keypad
- 250 user codes
- Lock and unlock from your smartphone within Bluetooth range

- App enabled access
- Manage codes and monitor activity
- One touch locking
- Bluetooth range

REMOTE ACCESS



Halo Touchscreen & Halo Touch Smart Lock

- Keyless Design with Touchpad entry keypad
- 250 user codes
- Wi-fi enabled
- Lock and unlock from your smartphone anywhere
- UL certified



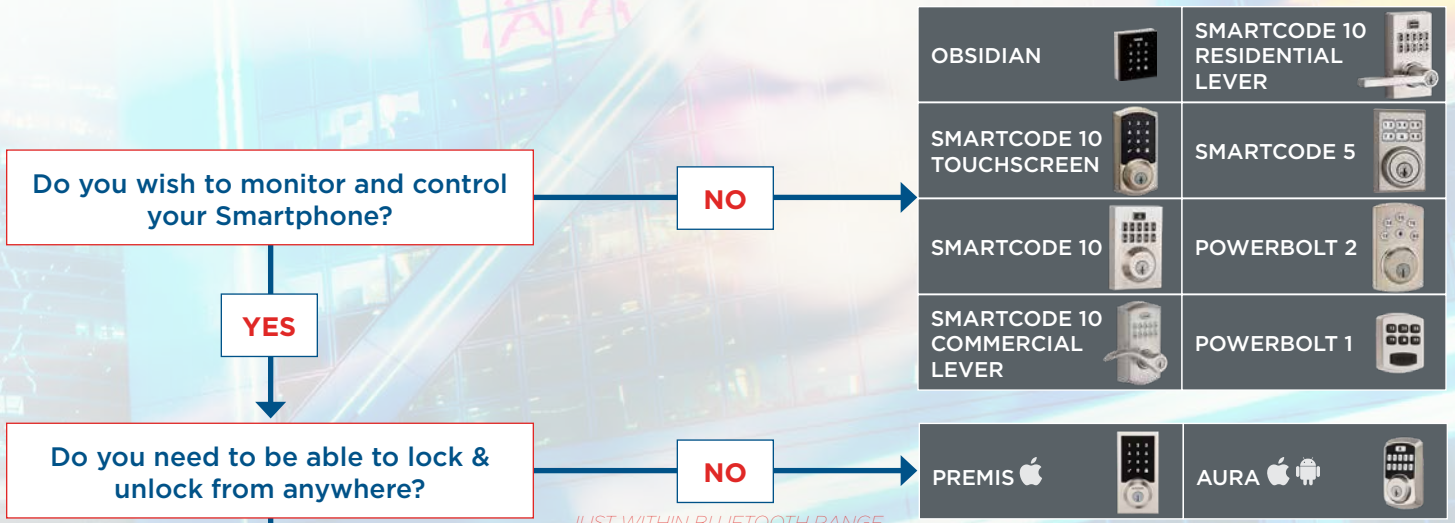
- App enabled access
- Manage codes and monitor activity
- One touch locking
- Works anywhere - no hub required

WHAT PROTOCOL DOES MY SMART HUB USE?



Samsung SmartThings
Wink Hub
Ring Alarm

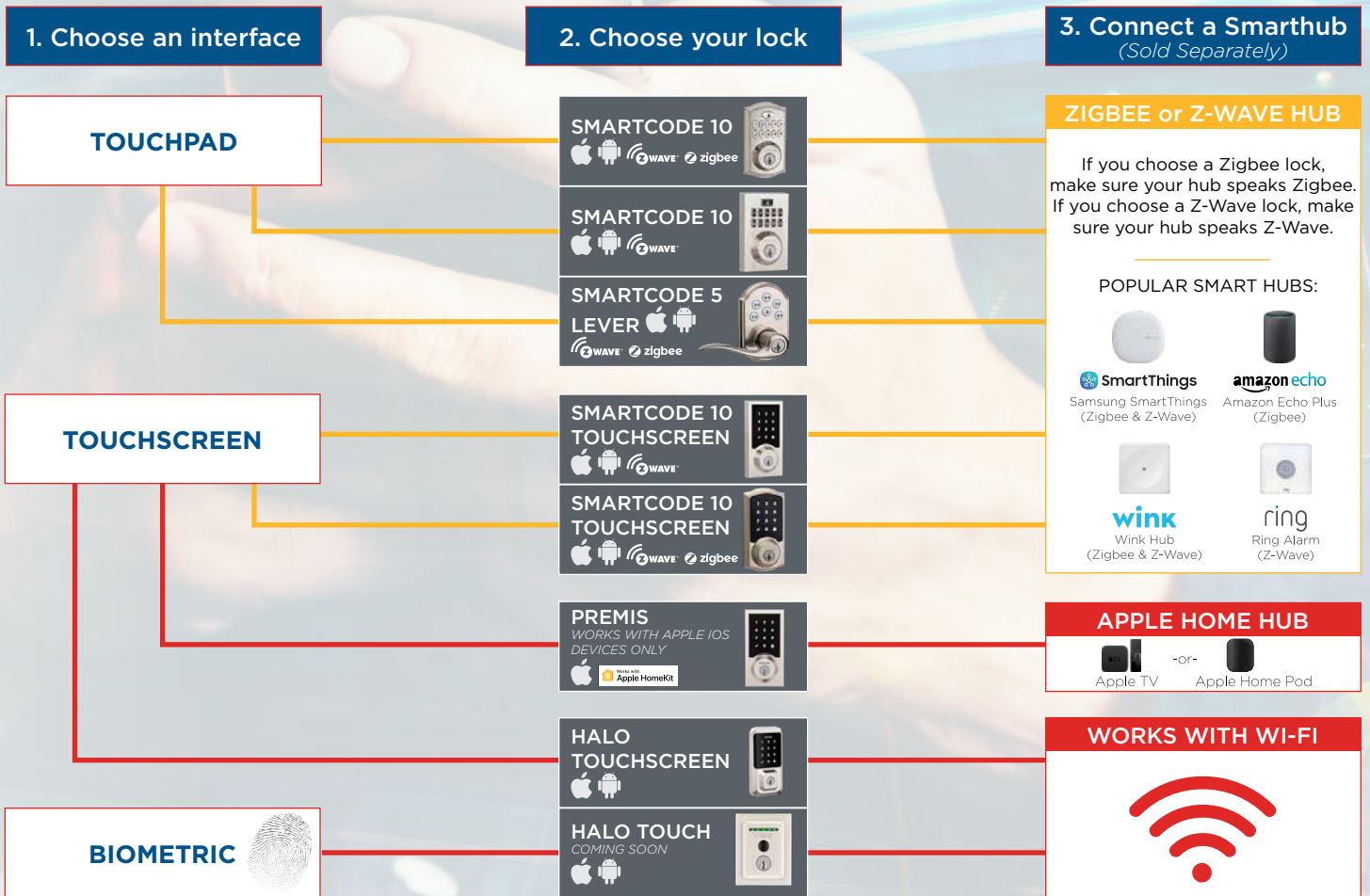
WHICH ELECTRONIC LOCK IS RIGHT FOR YOU?



FOLLOW THESE 3 STEPS

WHAT IS A SMART HUB?
 A Smart Hub is a small device you'll connect to your home's internet. It allows you to control compatible smart devices from anywhere using an app on your phone.

Smart Phone Smart Hub connected to your home's internet Smart Lock





HANDLESETS

Our handleset available in multiple styles, ranging from traditional to modern designed to add the perfect touch to your home.



**San Clemente
Handleset**
Matte Black



Tavaris | Polished Chrome



Hawthorne | Venetian Bronze



Ashfield

MICROBAN®
99.9% CLEANER*



Tavaris

MICROBAN®
99.9% CLEANER*



Augusta

MICROBAN®
99.9% CLEANER*



Camino

MICROBAN®
99.9% CLEANER*



Hawthorne

MICROBAN®
99.9% CLEANER*



Vancouver | Satin Nickel



Amador | Matte Black



San Clemente
w/ Sectional Trim

MICROBAN®
99.9% CLEANER*



Vancouver
w/ Full Escutcheon Trim

MICROBAN®
99.9% CLEANER*



Amador

MICROBAN®
99.9% CLEANER*



Kingsway

MICROBAN®
99.9% CLEANER*



168

168

168

168

INTERIOR & EXTERIOR FINISHES

Effortlessly combine sophisticated beauty with a touch of edge. From passage way knobs to bathroom privacy levers and closet levers — style is never compromised.



**SSD Deadbolt
+ Halifax Lever**
Polished Chrome



Troy | Satin Nickel



Cambie Round | Satin Chrome



Huntington | Satin Chrome



Cambie Square | Matte Black

TRADITIONAL



Hancock



Troy



Phoenix



Fairfax



Huntington



Laurel



Yukon



Regina



Athens

CONTEMPORARY



Cambie Square



Cambie Round





Ashfield | Venetian Bronze



Halifax Square | Matte Black



Toluca | Satin Nickel



Milan Round | Polished Chrome

TRADITIONAL



Ashfield



Avalon



Galiano



Aspen



Winston



Toluca



Alfini



Kim



Grapevine

CONTEMPORARY



Halifax SQT/RDT



Lisbon SQT/RDT



Sydney SQT/RDT



Milan SQT/RDT



Montreal SQT/RDT



Tristan SQT/RDT



Daylon SQT/RDT



Ladera



Westley



Elements | Polished Chrome



Downtown | Satin Nickel



Collections | Satin Nickel



Metropolitan Boutique Square | Matte Black

TRADITIONAL



Collections
Grade 1



Key Control
Round
Grade 2



Key Control
Square
Grade 2



CONTEMPORARY



Downtown
Grade 1



Uptown
Grade 1



Welcome
Home
Grade 2



Elements
Grade 3



Safelock
Grade 3



Metropolitan
Boutique
Square
Grade 1



Metropolitan
Boutique
Round
Grade 1



Elements
Square
Grade 1



KEY CONTROL DEADBOLT

The Smart Alternative to Master Keying

- Top concealed cylinder provides one-key control for the property manager
- Lower exposed cylinder allows unique user keys for the tenant
- **Maintain key control** through tenant and employee turnover
- **Increased efficiency** - Re-key the lock without removing from the door
- **Perfect for rental properties**



FINISH GUIDE



3
Polished Brass



5
Antique Brass



15
Satin Nickel



26
Polished Chrome

HANDLESETS	3	5	11P	15	15A	26	26D	514
Ashfield			•	•				•
Tavaris			•	•		•	•	•
Augusta	•	•		•	•		•	•
Camino			•	•		•	•	•
Hawthorne		•	•	•	•		•	•
San Clemete			•	•		•	•	•
Vancouver				•		•		•
Amador			•	•		•	•	•
Kingsway	•	•	•	•			•	

ELECTRONICS	3	5	11P	15	15A	26	26D	514
Aura				•				•
Premis				•				•
Obsidian				•				•
SmartCode 10	•		•	•			•	•
SmartCode10 Touchscreen	•		•	•				
Halo Touchscreen				•				•

DEADBOLTS	3	5	11P	15	15A	26	26D	514
Downtown			•	•		•	•	•
Uptown			•	•		•	•	•
Key Control	•		•	•			•	
Collections	•		•	•			•	•
Welcome Home	•		•	•	•	•	•	•
Metropolitan			•	•		•	•	•
Elements	•		•	•	•			
Elements Square				•		•	•	•
Safelock	•		•	•	•		•	

KNOBS	3	5	11P	15	15A	26	26D	514
Ashfield			•	•				•
Avalon			•	•				
Aspen			•	•			•	•
Galiano			•	•		•	•	
Halifax			•	•		•	•	•
Milan			•	•		•	•	•
Sydney			•	•		•	•	•
Toluca	•	•	•	•	•	•	•	•
Kim	•			•	•	•	•	
Alifini			•	•			•	
Tristan			•	•		•	•	
Ladera			•	•		•	•	
Daylon				•		•	•	•
Grapevine	•		•	•			•	
Winston		•		•			•	
Westley			•	•			•	



**11P
Venetian Bronze**



**15A
Antique Nickel**



**26D
Satin Chrome**



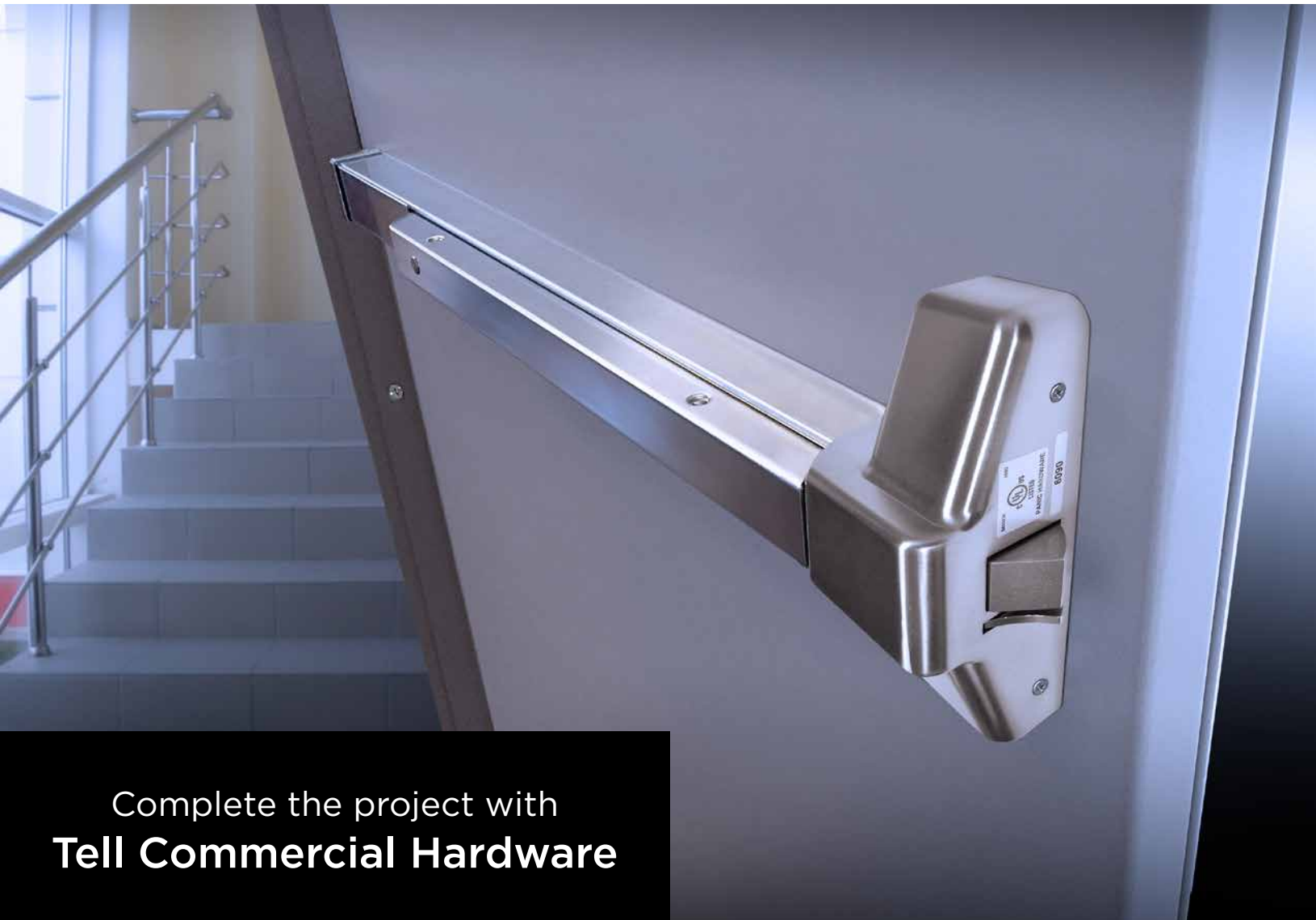
**514
Matte Black**

KNOBS	3	5	11P	15	15A	26	26D	514
Troy	•		•	•	•		•	•
Cambie	•	•		•				•
Huntington				•			•	
Laurel			•	•		•	•	•
Phoenix			•	•	•			
Hancock	•		•	•			•	•
Fairfax	•	•	•	•	•		•	
Yukon	•			•	•		•	
Regina	•		•	•			•	
Athens			•	•	•			





Commercial grade door locks, closers, exit devices, hinges with complete UL Listed preparation capabilities.

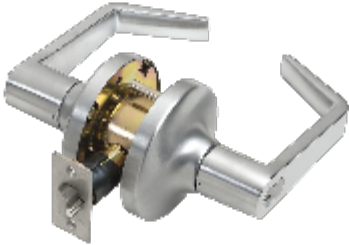


Complete the project with
Tell Commercial Hardware



HEAVY-DUTY LOCKSET

For use in: Best for heavily trafficked areas built for strength and security. Great for use on exterior doors



Grade	Entry	Store Room	Privacy	Passage	Comm.	Intruder	Exit Latch	Single Dummy
1	LC1281	LC1286	LC1276	LC1275	LC1291	LC12110	LC1280	LC1201
2	LC2481	LC2486	LC2476	LC2475	LC2491	LC24110	LC2480	LC2401
3	LC3681		LC3676	LC3675				LC3601

HEAVY-DUTY MORTISE

For use in: Entryways, Store Rooms
Commercial Grade Privacy and Passageways

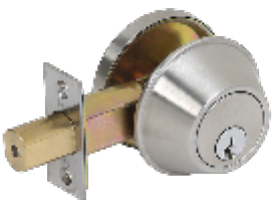


Grade	Entry	Store Room	Privacy	Passage
1	ML138104	ML138607	ML137619	ML137501



DEADBOLTS

For use in: Building entryways, Storerooms and Bathrooms



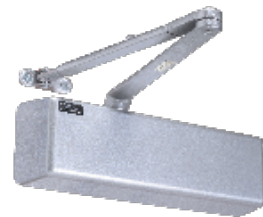
Grade	Single Cylinder	Single Cylinder (IC Core)	Double Cylinder	Double Cylinder (IC Core)	Comm.	Indicator Deadbolt
1	DB81051	DB1051 IC	DB1041	DB1041 IC		
2	DB2051	DB2051 IC	DB2041		DB2025	DB2071

DOOR CLOSERS

For use in:

- Entry ways
- Passage ways
- Stairwell exits
- Restrooms

Series	Grade	Standard Arm, Size Adjustable 3-6	Standard Arm, Size Adjustable 1-4	Standard Arm Single Sized Closer Sizes 2 to 5	Standard Arm, Size Adjustable 1-6
500	3	540	541	542-545	
600	1	640	641 641-ANTI	642-645	
700	1				741
800	1				816
900	1				916



EXIT DEVICES

For use in:

- Hallways or Stairwells
- Emergency exits



Series	Grade	24"	36"	48"	36" Surface Vertical Rod	48" Surface Vertical Rod
7000	1		7300B F7300B	7300A F7300A	7400B F7400B	7400A F7400A
8000	1	8300	8300B F8300B 8300B, Alarm	8300A F8300A	8400B F8400B	8400A F8400A
9000	1		9500B F9500B 9500B/EG	9500A F9500A	9400B F9400B	9400A F9400A
9100	Mortise Lock		9100B F9100B	9100A F9100A		

"F" products denote Fire rated products.
Surface vertical rod devices can also function as Less Bottom Rod.

"EG" products allow for delayed egress.
Contact Tell Manufacturing for more information

SPRING HINGES

Description	Finish	Item
4-1/2" x 4-1/2"	USP	HG100022
4-1/2" x 4-1/2"	26D	HG100014
4-1/2" x 4-1/2"	3	HG100017
4-1/2" x 4"	26D	HG100308
4-1/2" x 4"	15	HG100309





BALDWIN®

RESERVE™



Longview
Dark Bronze

TRADITIONAL



Chesapeake
(CHE)



Columbus
(COL)



Del Mar
(DEL)



Elizabeth
(ELI)



Napa
(NAP)



New Hampshire
(NEW)



Westcliff
(WES)



Crystal (CRY)
Shown with Traditional
Arched Rose



Ellipse (ELL)
Shown with Traditional
Round Rose



Round (ROU)
Shown with Traditional
Square Rose



Traditional (TRA)
Shown with Traditional
Arch Rose



Traditional Round
Deadbolt (TRD)



Traditional Square
Deadbolt (TSD)



Traditional Arch
Deadbolt (TAD)



Curve (CUR)
Shown with Traditional
Round Rose



Decorative (DEC)
Shown with Traditional
Arch Rose



Federal (FED)
Shown with Traditional
Square Rose



Crystal Knob shown in a variety of finishes.



Chesapeake
Multipoint



Del Mar
Multipoint



S
Knocker



Contemporary
Knocker



Ring
Knocker



Rectangular
Bell Button

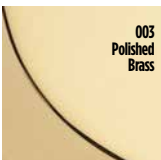


Oval
Bell Button

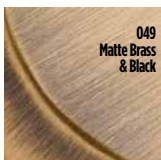


Arch
Bell Button

TRADITIONAL FINISHES AVAILABLE



003
Polished
Brass



049
Matte Brass
& Black



260
Polished
Chrome



141
Polished
Nickel



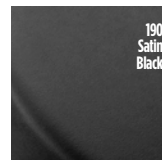
150
Satin
Nickel



152
Matte Antique
Nickel



112
Venetian
Bronze



190
Satin
Black

CONTEMPORARY

RUSTIC



La Jolla
(LAJ)



Miami
(MIA)



Seattle
(SEA)



Santa Cruz
(SAN)



Adirondack
(ADI)



Elkhorn
(ELK)



Kodiak
(KOD)



Longview
(LON)



Contemporary Round
Deadbolt (CRD)



Contemporary Square
Deadbolt (CSD)



Contemporary (CON) Shown with
Contemporary Square Rose



Rustic Arch Deadbolt
(RAD)



Rustic Square Deadbolt
(RSD)



Tube (TUB)
Shown with Contemporary Round
Rose



Square (SQU)
Shown with Contemporary
Square Rose



Taper (TAP)
Shown with Rustic
Square Rose



Arch (ARC)
Shown with Rustic
Arch Rose



Rustic (RUS)
Shown with Rustic
Square Rose



Seattle
Multipoint



Elkhorn
Multipoint



Longview
Multipoint



Contemporary
Door Knocker



Rectangular
Bell Button



Seattle Handleset, Contemporary Knocker and
Rectangular Bell Button in Polished Chrome finish



Ring
Door Knocker



Arch
Bell Button

CONTEMPORARY FINISHES AVAILABLE



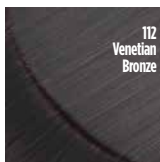
260
Polished
Chrome



141
Polished
Nickel



150
Satin
Nickel



112
Venetian
Bronze

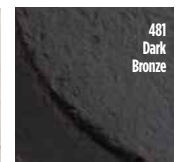


190
Satin
Black

RUSTIC FINISHES AVAILABLE



492
White
Bronze



481
Dark
Bronze

Weiser® Warranty

Lifetime Mechanical Warranty

Lifetime Finish Warranty

Weiser™ products provide a “Lifetime Mechanical Warranty” that covers all defects in material and workmanship. This warranty excludes locks that have been damaged by installation contrary to our written instructions or modified with non-Weiser components. Effective December 1, 2001 Weiser extends a “Lifetime Finish Warranty” against corrosion, tarnishing or discoloring on its Weiser products. This warranty excludes scratches or abrasions, misused or abused products or products used in commercial applications. “Commercial” is defined as any application other than those found on private residences. In order to qualify for the lifetime Finish Warranty, purchaser must have a proof of purchase dated no earlier than 12/1/2001 or the product in question must have a production date stamp of 12/1/2001 or later. As an exception, the Lifetime Finish Warranty applies to all Weiser products with a Brilliance® finish (Bright Brass, Bright Chrome or Satin Chrome) regardless of purchase or production date. These warranties last while the original purchaser lives and owns the lock. Incidental or consequential damages are excluded. (Some states do not allow the exclusion or limitation of incidental or consequential damages, so this exclusion may not apply to you). To register a warranty claim in the USA, return the product, freight pre-paid to: Customer Service Weiser 19701 DaVinci, Lake Forest, CA 92610. To register a warranty claim in Canada, please contact us by our toll free number 1-800-501-9471. Weiser will repair or replace the lock, or refund the purchase price (if it is not practical to repair or replace). You will be responsible for the removal of the old lock and reinstallation of the new one. This warranty provides you with specific legal right and you may also have other rights that vary from state to state.

Elements by Weiser® Warranty

Lifetime Mechanical Warranty

Products are warranted for a lifetime from date of purchase against mechanical failure due to faulty workmanship or materials. The warranty lasts while the original purchaser owns the lock. This warranty does not cover the finish, defects or damage arising from improper installation, incorrect product application, improper maintenance, storage, shipping, handling or normal wear and tear or products used in commercial applications as determined by Weiser Inc. “Commercial” is defined as any application other than those found on private residences.

Lifetime Finish Warranty - Products are warranted for a lifetime from date of purchase against finish deterioration, while the original purchaser owns the lock. This warranty does not cover defects or damage arising from improper installation, incorrect product application, improper maintenance, storage, shipping, handling or normal wear and tear as determined by Weiser Inc.

To register a warranty claim in the USA, please return the product, freight pre-paid to: Customer Service Weiser 19701 DaVinci, Lake Forest, CA 92610. To register a warranty claim in Canada, please contact us by our toll free number 1-800-501-9471.

Safelock by Weiser® Warranty

Lifetime Mechanical Warranty

Products are warranted for a lifetime from date of purchase against mechanical failure due to faulty workmanship or materials. The warranty lasts while the original purchaser owns the lock. This warranty does not cover the finish, defects or damage arising from improper installation, incorrect product application, improper maintenance, storage, shipping, handling or normal wear and tear or products used in commercial applications as determined by Weiser Inc. “Commercial” is defined as any application other than those found on private residences.

5 Year Finish Warranty - Products are warranted for 5 years from date of purchase against finish deterioration, while the original purchaser owns the lock. This warranty does not cover defects or damage arising from improper installation, incorrect product application, improper maintenance, storage, shipping, handling or normal wear and tear as determined by Weiser Inc.

To register a warranty claim in the USA, please return the product, freight pre-paid to: Customer Service Weiser 19701 DaVinci, Lake Forest, CA 92610. To register a warranty claim in Canada, please contact us by our toll free number 1-800-501-9471.

Weiser® Electronic Lock Warranty

1 Year Limited Warranty on Electronic Components

Lifetime Mechanical Warranty

Lifetime Finish Warranty

Weiser's electronic products provide a "Lifetime Mechanical Warranty" that covers all defects in material and workmanship. This warranty excludes locks that have been damaged by installation contrary to our written instructions or modified with non-Weiser components. Effective December 1, 2001 Weiser extends a "Lifetime Finish Warranty" against corrosion, tarnishing or discoloring on its electronic products. This warranty excludes scratches or abrasions, misused or abused products or products used in commercial applications. In order to qualify for the Lifetime Finish Warranty, purchaser must have a proof of purchase dated no earlier than 12/1/2001 or the product in question must have a production date stamp of 12/1/2001 or later. As an exception, the Lifetime Finish Warranty applies to all electronic products. All electrical components are covered by a "One Year Limited Warranty." These warranties last while the original purchaser lives and owns the lock. Incidental or consequential damages are excluded. (Some states do not allow the exclusion or limitation of incidental or consequential damages, so this exclusion may not apply to you). To register a warranty claim in the USA, please return the product, freight pre-paid to: Customer Service Weiser 19701 DaVinci, Lake Forest, CA 92610. To register a warranty claim in Canada, please contact us by our toll free number 1-800-501-9471. Weiser will repair or replace the lock, or refund the purchase price (if it is not practical to repair or replace). You will be responsible for the removal of the old lock and reinstallation of the new one. This warranty provides you with specific legal rights and you may also have other rights that vary from state to state.

Tell Hardware Limited Warranty

Lifetime Mechanical Warranty

Tell Manufacturing warrants that its products are free from defects in workmanship and material under normal use and service. This warranty does not cover defects or damage which occur from improper maintenance, improper storage, improper installation, shipping and handling, ordinary wear and tear, misuse, abuse, accident, unauthorized service, work done by others, and consequential damages. Tell Manufacturing's only liability, in tort or contract, whether under this warranty or otherwise, is limited to providing repair or replacement of any product or component part believed to be defective as covered by this warranty.

Claims should be sent to Tell Manufacturing, 18 Richard Drive, Lititz, PA 17543, and should include claimant's name and address, identification of the product, invoice number and date, and a brief description of the defect. Upon receipt of such notice, a Tell Manufacturing representative will contact claimant as to where to ship such product or component part, shipping charges prepaid, for examination and, in the event such examination reveals a defect covered by this warranty, the product will be repaired or replaced.

This warranty is in lieu of all other express warranties. To the extent permitted by law, all implied warranties are limited to the duration of the product category's warranty.

Baldwin Reserve Limited Warranty

Limited Lifetime Mechanical Warranty

Except as limited below, Baldwin Hardware warrants to the original residential purchaser that each Baldwin Reserve product shall be free of mechanical defect for as long as the Purchaser occupies the residential premises upon which the product was originally installed.

LIMITED 25-YEAR FINISH WARRANTY

Limited Finish Warranty: The finish on Baldwin products (excluding Lifetime PVD Finish and living finish products) is protected by a durable topcoat designed to maintain the beauty and quality of the Baldwin product. Except as limited below, Baldwin Hardware warrants to the Purchaser that the finish on each Baldwin Reserve product shall not corrode, tarnish or discolor for 25 years from the original date of purchase.

This warranty DOES NOT COVER scratches; abrasions; or deterioration due to the use of paints, solvents, or other chemicals; abuse; damage from improper installation, misuse; product(s) used in commercial applications and/or any labor required to remove or replace the product under warranty. The warranty is limited to Purchasers who occupy the residential premises upon which the product was originally installed. Proof of purchase required.

Refer to www.baldwinhardware.com for a complete warranty statement.



Spectrum
Brands

Hardware &
Home Improvement

baldwinhardware.com

tellmfg.com

weiserlock.com